

Vittra^{APS} UNIQUE

CE
2797

Universal chroma composite with capacity to match the tooth shade.

FAST AND PRACTICAL PROCEDURES?
CHOOSE UNIQUE.

Composite and syringe free of Bisphenol A.



Also available
In capsules



Chameleon effect:

Due its characteristics of chromatic mirroring, the composite captures and reflects the shade of the dental substrate during the polymerization process. The load, well-dosed opacity and esthetics of the APS system are fundamental to reach the **perfect mimicry**.



Universal chroma:

From Bleach to D4 with only one shade! It does not require layering most cases and enables the adoption of a simple incremental technique, without using different degrees of opacity/translucency.



High esthetics and mechanical resistance:

Besides excellent shine and polishing, it has high rates of flexural strenght and fracture resistance to withstand the stress resulting from masticatory forces.



It does not require shade selection and, therefore, allows for faster restroative procedures, increases the professional's productivity and reduces the stock of the shades.

APS ADVANTAGES

- Color transmission facilitated due to the low concentration of camphorquinone in the composition: the APS system uses more transparent photoinitiators;
- Longer working time under the reflector's/ambient light;
- Increased mechanical properties.

THE OPTICAL PROPERTIES OF VITTRA APS UNIQUE **ARE DEFINED AFTER POLYMERIZATION:**

BEFORE

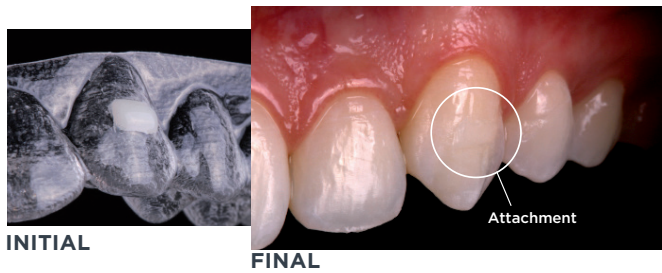


AFTER



GALLERY

Author: Dr. Thiago Roberto Gemeli.



Author: Dr. Carlos E. Francci, Dr. Alexander C. Nishida and Dr. Guilherme de S. F. Anzaloni Saavedra.



Author: Prof. Dr. Fábio Sene.

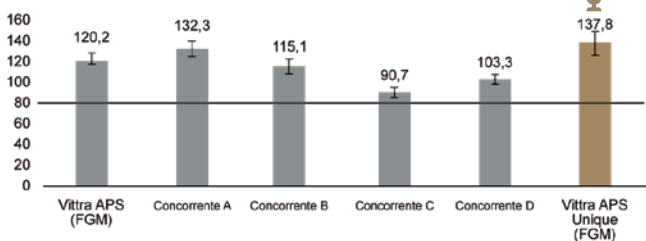


Author: Prof. Dr. Dayse Amaral.



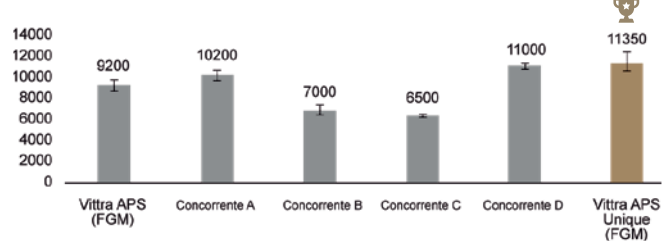
SCIENTIFIC PROOF

Flexural strenght (MPa*)



Vittra APS Unique features flexural strenght superior to most competing products analyzed, with results up to 70% higher than the reference stipulated by the ISO 4049 standard (>80 MPa). The greater result, the greater the capacity of the composite to withstand the stress resulting from masticatory forces.

Flexural modulus (MPa*)



Vittra APS Unique presented compatible result to what is stated in the literature for human dentin (between 11700 and 18300MPa***) and higher than competitors analyzed, demonstrating excellent resistance to acclusal forces, thus proving suitable for all classes of restorations.

* Internal data. **Anusavice, K.J; Shen, C; Rawls, H.R. - Phillips Materiais Dentários. 12ª Edição. Rio de Janeiro: Elsevier, 2013.

AVAILABILITY

Refill	Capsules
<p>Syringe with 4g: one shade for all shades.</p>	<p>Content: Package containing 20 capsules of 0.2g, one shade for all shades.</p>

Check product availability in your country.

Indications:

- Permanent and decicus teeth: direct restorations in anterior and posterior teeth (classes I, II, III, IV, V and VI).
- Use as a base composite: necessary when there is no wall in the back to be copied or when it has a color modification you do not wish to mimic.

PLEASE NOTE: class I, II, V and VI cavities: if there is darking cover the area with dentin composite or opacifiers (according to your preference) and proceed to restoration in the incremental technique with Vittra APS Unique. Class III and IV cavities (without black wall to support shade): make a layer that will serve as background for the rest of the volume with Vittra APS Unique in the incremental way.